



NEWSLETTER



JUNE 2026

Clearfield County Response to June 14, 2026, Severe Weather Outbreak Sunday June 14th 2026

Edited by Drew McGhee KA3EJV

Wow. A huge thank you to everyone helped out during the afternoon and evening of Sunday, June 14, 2026, as we witnessed a line of severe thunderstorms move northeasterly across western Pennsylvania.

That Sunday started out with most of Pennsylvania placed under a Slight Risk for Severe Weather by the National Weather Service (NWS) Storm Prediction Center (SPC). See Figure 1

below. At 1:25 PM, the NWS SPC issued Severe Thunderstorm Watch #333. This Watch covered the western third of Pennsylvania. Watch #333 included Jefferson County but not Clearfield County. See Figure 2 at right.

At 3:20 PM, the NWS Pittsburgh

Weather Forecast Office (WFO) issued Tornado Warning #14 for Jefferson County. See Figure 3 at right. Jefferson County is serviced by the NWS Pittsburgh WFO. Shortly after that, at 3:50 PM, the NWS State College WFO issued Tornado Warning #4 for Clearfield County. See Figure 4 at right. The NWS State College WFO provides service for Clearfield County.

Starting around 5:06 PM, a SKYWARN® Net was activated on

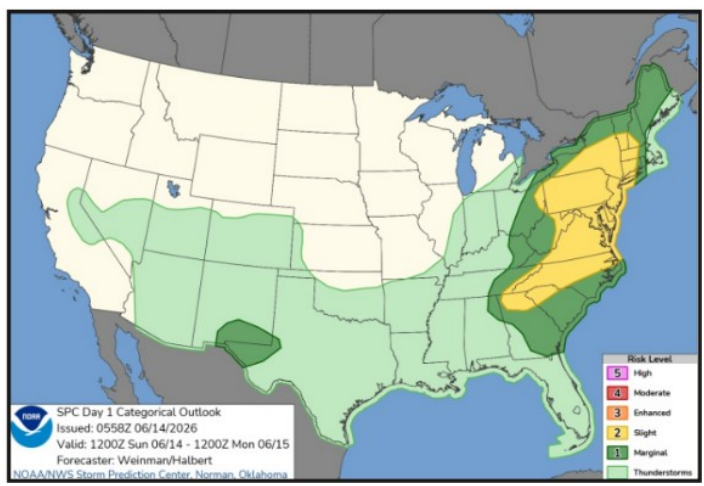


Figure 1.(1) NWS SPC Day 1 Hazardous Weather Outlook graphic for Sunday, June 14, 2026.

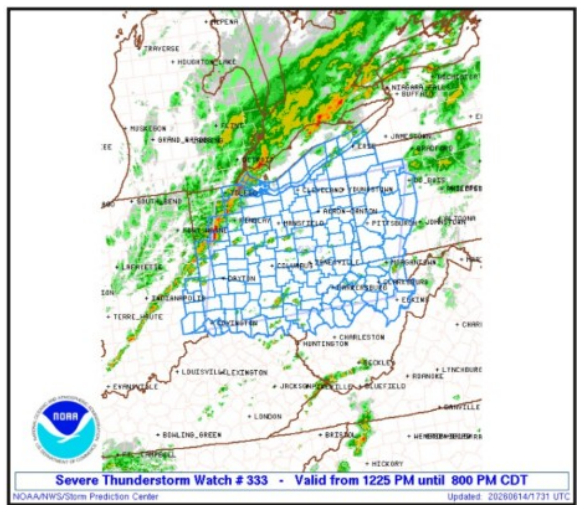


Figure 2.(2) Counties included in the NWS SPC issued Severe Thunderstorm Watch #333 on June 14, 2026. Radar image was as that at issuance.

the W3CPA repeater (147.255+ MHz, 173.8 Hz) in response to a report of a tornado that had touched down next door in the Brookville area of Jefferson County. The storm that produced the reported tornado was tracking toward the northwestern corner of Clearfield County. DuBois, Treasure Lake, and Penfield were all in the path of

that storm cell. Dan Grassi N3TVG
Continued on Page 2.

CLEARFILED COUNTY AMATEUR RADIO CLUB
www.clearfieldcountyarcc.net

<p>CCARC Officers</p> <p>President: Tim Lumadue N3PUL Vice President: Scott Rummings W3EOD Secretary: John Szwarc N3SPW Treasurer: Ed Kumm KC3ZAL</p>	<p>CCARC Board of Directors</p> <p>Director: Harvey Haag N3RTK (Exp. 12/31/2026) Director: Rich Brnik N3RBJ (Exp. 12/31/2027) Director: Mike Errigo WB3EQW (Exp. 12/31/2028)</p>
---	--

SKYWARN

Continued from Page 1.

stepped up to act as the SKYWARN Net Control Station (NCS). Soon, nine stations checked in to provide weather observations. Carmine Prestia Jr. K3CWP, who lives in State College, Centre County, traveled to the NWS State College WFO and activated WX3CTP, the NWS Amateur Radio station located there. This provided direct communications between the NWS and Clearfield County. At 5:26 PM, the NWS State College WFO issued Tornado Warning #6 for Clearfield County. This warning basically extended the coverage of and time of Tornado Warning #4. See Figure 5 below.

At 5:40 PM, the NWS SPC issued Tornado Watch #336. This Watch covered Jefferson and Clearfield Counties as well as almost a third of Western Pennsylvania. See Figure 6 at right. Around 7:30 PM, the Clearfield County EMA Director, Scott Mignot, requested the Clearfield County Auxiliary Communications Service (Clearfield ACS) team to go into a standby mode. The county's linked communications tower system had multiple towers along the western edge of the county throwing alarms and intermittently losing contact with the system due to the advancing severe weather. Scott requested Clearfield ACS activate the Amateur Radio station at the county EMA Center and build a roster of available operators that are prepared to deploy to remote locations to provide communications assistance. Ed Kumm

KC3ZAL activated the Clearfield County EMA Center Amateur Radio station. Dan N3TVG continued his SKYWARN NCS duties. Dan N3TVG called for volunteers to build a roster of prepared stations for potential deployment. Before anyone was deployed though, the towers started coming back on line and the situation was defused



This image of the approaching storm over Clearfield at approximately 5:32 PM was provided by Chuck KM4NSC.



Figure 3.(3) NWS Pittsburgh WFO issued Tornado Warning #14. Radar image was as that at issuance. County names added for clarity.

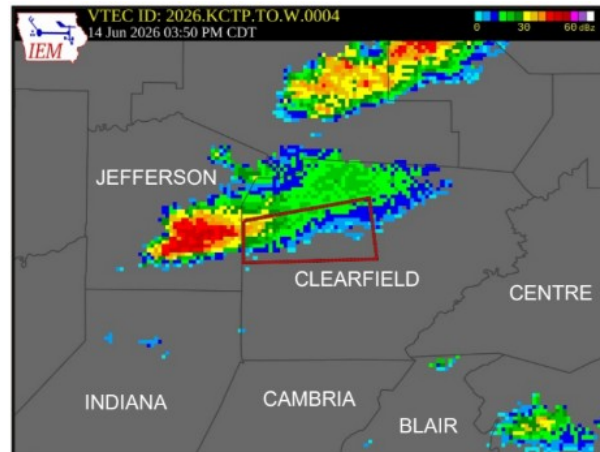


Figure 4.(4) NWS State College WFO issued Tornado Warning #4. Radar image was as that at issuance.

without assistance. Ed Kumm KC3ZAL did remain at the Clearfield County EMA station until the entire weather front had passed through Clearfield County.

A big thank you to Dan N3TVG who, as I understand it, had never run a SKYWARN net. Also, hats off to Ed KC3ZAL. Ed had just arrived home from Virginia before traveling to the county EMA building and activating the Clearfield County EMA Amateur Radio station. And thank you to everyone who supported this net, Brian Bullers KD3AYB, Gary [CALLSIGN], Tim Lumadue N3PUL, Greg Guise K3HOT, from the State College area, John Szwarc N3SPW, Carmine

SKYWARN

Continued from Page 2.

K3CWP, and Steven Kumm KC3ZAM.

Thank you to everyone involved. I know Scott, at the county EMA, was very appreciative as well. In a text Scott wrote, "Thank you for supporting this operation today. And if you would, thank the Clearfield Amateur Radio group for being there when we need them. This was also a

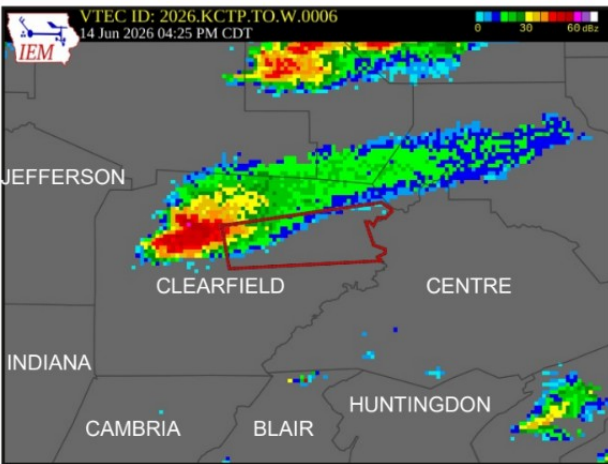


Figure 5.(5) NWS State College WFO issued Tornado Warning #6. Radar image was as that at issuance.

very good exercise to get a good gauge on no-notice readiness to get radio support set up countywide. Great job."

Fortunately there was no loss of life and only minimal damage from this storm. But as we all know, it's best to be prepared! So, thank you!

Both the NWS Pittsburgh and State College WFOs produced reports for the Sunday, June 14, 2026, severe weather outbreak. The NWS State College WFO report is available at <<https://www.weather.gov/ctp/Tornadoesof14June2026>>. The initial NWS Pittsburgh WFO report is available as "Jefferson County, PA,

Tornado June 14, 2026" on Page 4 of this newsletter. As additional details were reported and confirmed, this initial report was updated. Update "2" is available at <<https://mesonet.agron.iastate.edu/wx/afos/p.php?pil=PNSPBZ&e=202606162335>>.

Update "3" is available at <<https://mesonet.agron.iastate.edu/wx/afos/p.php?pil=PNSPBZ&e=202606171651>>.

Update "4," the last update at the time this newsletter went out, is available at <<https://mesonet.agron.iastate.edu/wx/afos/p.php?pil=PNSPBZ&e=202606192327>>.

Update "4," the last update at the time this newsletter went out, is available at <<https://mesonet.agron.iastate.edu/wx/afos/p.php?pil=PNSPBZ&e=202606192327>>.

Update "4," the last update at the time this newsletter went out, is available at <<https://mesonet.agron.iastate.edu/wx/afos/p.php?pil=PNSPBZ&e=202606192327>>.



Figure 6.(6) Counties included in the NWS SPC issued Severe Thunderstorm Watch #336 on June 14, 2026. Radar image was as that at issuance.

Notes.

(1) Storm Prediction Center Jun 14, 2026 0600 UTC Day 1 Convective Outlook. (2026). Noaa.Gov.

<https://www.spc.noaa.gov/products/outlook/archive/2026/day1otlk_20260614_1200.html>.

(2) Center, S. P. (2026). Storm Prediction Center Severe Thunderstorm Watch 333. Noaa.Gov.

<<https://www.spc.noaa.gov/products/watch/2026/ww0333.html>>

(3) akrherz@iastate.edu. (2025). KPBZ Tornado Warning #14. Iastate.Edu.

<<https://mesonet.agron.iastate.edu/vtec/?year=2026&wfo=KPBZ&phenomena=TO&significance=W&eventid=14&tab=info&radar=USCOM>>

(4) akrherz@iastate.edu. (2025). KCTP Tornado Warning #4. Iastate.Edu. <

<https://mesonet.agron.iastate.edu/vtec/?year=2026&wfo=KCTP&phenomena=TO&significance=W&eventid=4&tab=info&radar=USCOMP>>

(5) akrherz@iastate.edu. (2025). KCTP Tornado Warning #6. Iastate.Edu.

<<https://mesonet.agron.iastate.edu/vtec/?year=2026&wfo=KCTP&phenomena=TO&significance=W&eventid=6&tab=info&radar=USCOMP>>

(6) Center, S. P. (2026). Storm Prediction Center Tornado Watch 336. Noaa.Gov.

<<https://www.spc.noaa.gov/products/watch/2026/ww0336.html>>.

Jefferson County, PA, Tornado June 14, 2026

078
 NOUS41 KPBZ 192327
 PNSPBZ
 OHZ041-PAZ008-014-016-020-
 201130-
 PUBLIC INFORMATION STATEMENT
 National Weather Service Pittsburgh
 PA
 727 PM EDT Fri Jun 19 2026
 ...NWS Damage Survey for June 14th
 2026 Tornado Event Update #4...
 .Update...The Anita PA tornado has
 been upgraded to EF2 (max wind 115
 mph) based on aerial imagery of
 forested areas inaccessible from the
 ground.
 We are continuing to review damage
 reports near other known tornado
 tracks from June 14th, particularly in
 Venango, Butler and Beaver Counties,
 so additional updates are possible, as
 some damage may be located in
 inaccessible areas from the ground.
 Additional aerial perspective may be
 needed to evaluate the tracks
 completely.
 .Anita PA Tornado...
 Rating: EF2
 Estimated Peak Wind: 115 mph
 Path Length /statute/: 3.76 miles
 Path Width /maximum/: 300 yards
 Fatalities: 0
 Injuries: 0
 Start Date: 06/14/2026
 Start Time: 04:36 PM EDT
 Start Location: 4 WNW
 Punxsutawney / Jefferson County / PA
 Start Lat/Lon: 41.0042 / -79.013
 End Date: 06/14/2026
 End Time: 04:49 PM EDT
 End Location: 4 WNW Big Run /
 Jefferson County / PA

End Lat/Lon: 41.0155 /
 -78.9471
 Survey Summary:
 With the guidance of Jefferson
 County EMA, a survey team from
 NWS Pittsburgh evaluated damage
 from Sunday`s storms in Jefferson
 County, PA. The team has confirmed
 that the damage observed was the
 result of a tornado.
 Damage was first seen in a wooded
 area bounded by Nickles Road and
 London Road, mainly in the form of
 sporadic snapped limbs.
 As the storm emerged from the
 wooded area, it snapped softwood
 trees at a farmstead near Burns and
 Anita Oliveburg Road. The tornado
 weakened briefly as it progressed
 eastward, with intermittent damage
 to limbs along Anita Oliveburg Road
 and Blocks Rd, including one on a
 shed.
 After crossing to Knox Dale Road, the
 tornadic circulation strengthened and
 grew in size, and damage became
 considerably more consistent and
 notable. Beginning here and
 continuing northeast toward Route
 310, large swaths of healthy and
 sturdy hardwood and softwood trees
 were snapped and uprooted, most
 notably near Team Road and along
 an adjacent hillside. On this hillside
 was the most significant damage,
 where almost no tree was left intact.
 Despite the increase in intensity,
 damage to adjacent structures
 appeared limited, suggesting the
 gradient in wind speed across the
 tornadic circulation was sharp.
 NEW Based on aerial video and

photography, wind speed along the
 segment of the path from KnoxDale
 Road along Team Road was
 estimated to be up to 115 mph. This
 tornado has been upgraded to EF2
 strength.***
 After descending the hill along Route
 310 toward Shane Dr, the circulation
 weakened only slightly, and damage
 continued, consisting of snapped and
 uprooted trees. Also in this area, a
 home lost its carport and suffered
 light damage to siding and roof
 material. Here wind was most
 consistent with 90-100 mph speed.
 NEWDamage to a barn and
 trees along Graffius Ave Extwas
 brought to the survey team`s
 attention on Tuesday, enabling the
 survey team to extend the prior path
 over the hillside adjacent to Shane
 Dr.***
 The most significant observed
 damage is consistent with EF2 wind
 speed (max wind 115 mph). No
 tornadic damage was reported
 elsewhere across Jefferson County.
 Additional extensive searches for
 damage were conducted in the
 Ringgold area, and near Corsica, to
 no avail.
 As of this update, the tornado`s path
 is updated to 3.76 miles, with a
 maximum width of 300 yd.
 NWS Pittsburgh is grateful for the
 assistance of Jefferson County EMA,
 local township fire department
 personnel, and the public for their
 damage reports and aerial imagery
 that facilitated the completion of this
 survey.

CCARC Repeaters

W3CPA 147.255+, PL 173.8 Hz

Rockton Mountain

This is CCARC's primary repeater and is sponsored by the Clearfield County Emergency Management Agency.

W3CPA 444.625+ DMR

Rockton Mountain

Repeater DMR ID: 314287. This repeater provide wide-area DMR coverage for Clearfield County and the surrounding regions.

WRDV964 462.650+, PL 141.3 Hz

Rockton Mountain

GMRS service repeater is co-located at the top of Rockton Mountain with the W3CPA 147.255 repeater.

W3CPA 145.370+ D-STAR, P25, DMR, FM

Wallaceton

Off-air/Under Construction.

Announcements will be made when it becomes active.

CCARC Summer Picnic

At the May 2026 CCARC meeting the idea of holding a club Summer Picnic was brought up and discussed. All present agreed this was a good idea and Harvey N3RTK offered to host the picnic at his camp, named "Hutte im Wald", near Penfield.

Plans are progressing and the picnic will be held on Saturday August 15th starting at 2 PM. Please bring a covered dish to share as well as the beverages or drinks of your choice. The club will be providing the hot dogs, hamburgers and rolls for the event.

Harvey N3RTK and Janet N3ZFX's camp is equipped with enough silverware and paper products to host our event. And Janet has already started gathering the

needed condiments as well. So please say thank you for their contributions to this event. There will be activities available as well. Hiking, boccie ball games, corn hole or even bring a BB gun to target practice with.

Everyone wishing to attend is asked to RSVP to Harvey at hhaag@verizon.net or on his cell at



814-553-1205. This will allow our hosts to have an idea of how many people to expect. Hope to see everyone there.

Clearfield County WinLink Nodes

WinLink Gateway W3CPA-10

Clearfield

Grid Square: FN01SB

Frequency: 440.950 MHz. Modes

supported: Packet, Packet 1200, VARAFM and VARAFM WIDE

WinLink Gateway W3CPA-11

West Decatur

Grid Square: FN00UW

Frequency: 440.975 Mhz. Modes

supported: Packet, Packet 1200, VARAFM and VARAFM WIDE

WinLink Gateway W3CPA-12

Houtzdale

Grid Square: FN00TT

Off air/Under Construction.

Frequency: 441.000 Mhz. Modes

supported: Packet, Packet 1200, VARAFM and VARAFM WIDE

WinLink Gateway W3CPA-13

DuBois

Grid Square: FN01PD

Off air/Under Construction Grid Square:

FN00UW

Frequency: 441.025 Mhz. Modes

supported: Packet, Packet 1200, VARAFM and VARAFM WIDE



CCARC Field Day 2026

ARRL Field Day 2026 will take place June 27-28, 2026. And the Clearfield County Amateur Radio Club will once again be set up at Harvey N3RTK and Janet N3ZFX's camp, named "Hutte im Wald", 735 Bennett Road, Penfield.

Field Day itself begins at 2 PM local time on Saturday and runs through 2 PM on Sunday. But we can set up antennas and such on Friday evening. Bring a sleeping bag and other essentials if you'd like to stay overnight. Bring the kids. Bring the wife. Bring the neighbors. All are welcome. If you don't have an amateur radio license, no worries. You can operate under the club's call sign for this event.

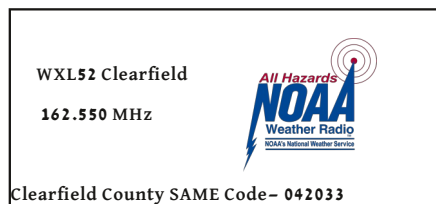
Harvey is planning to bring his rig and will have an off center dipole antenna setup. If you'd like to bring an additional radio and antenna please feel free. But please let Harvey know in advance so he can coordinate things.

Whether you're an experienced operator, or relatively new to HF operations, Field Day is an exceptional opportunity to either teach skills to others or get some first hand experience on the HF bands. There will be hundreds of other stations on the air during this

contest and it can be very fast paced at times. It's an experience for sure. If you haven't participated in Field Day in the past, you should really consider it.

Also, following Field Day on Sunday at 2 PM we will have a club picnic and the June CCARC meeting. The club will be providing hot dogs, hamburgers and rolls. Everyone is asked to bring a dish to share and beverages of your choice. Aside from radios, there are also other amusements there like corn hole, bocci, or even a hike in the woods.

Harvey would like to have a headcount of who is expected. Please let him know at hhaag@verizon.net or on his cell at 814-553-1205.



Nets of Interest

Western PA Phone Traffic Net

Daily at 5PM on 3.983 MHz

Treasure Lake Sportmans

Mondays 8PM on 442.525+ PL 173.8 Hz

Mondays 8:05PM on 445.525 Mhz Simplex

Mondays 8:10PM on 146.457 MHz Simplex

Mondays 8:15PM on 147.225+ PL 173.8 Hz

WPA D-STAR Net

Mondays at 9PM on D-STAR reflector REF 63C.

Clearfield County ARC Net

Tuesdays 8 PM on 147.255+ PL 173.8 Hz

WPA Section DMR Net

Wednesdays 7:30PM on DMR talk group 31422 WPA

WPA ARES Voice Net

Saturdays 9AM on 3.983 MHz LSB.

PARA Weekly Net

Saturdays 9PM on 146.430+1 MHz, PL 173.8 Hz

PA NBEMS Net

Sundays at 7:30AM on 3583MHz USB / 1500 Hz Waterfall, using THOR 22.

PEMA ACS Statewide Net

Sundays at 8AM on 3.9935 MHz

PEMA ACS Western PA Area Net

Sundays at 9AM on 39905 MHz.

Quad County FM Net

Sundays 7PM on 147.315+ PL 173.8Hz

Local EmComm Groups and Where to Find Them

Clearfield County EmComm Simplex Frequency: 146.55 MHz

Clearfield County ACS/RACES

W3CPA - Clearfield

147.255+, PL 173.8 Hz

PARA EmComm Team

W3PHB - Philipsburg

146.430+1MHz, PL 173.8Hz

Treasure Lake EmComm Team

K3JRW - Treasure Lake

442.525+, PL 173.8 Hz

Jefferson Co ARES/ACS/RACES

KB3FPN - Reynoldsville

146.865-, PL 173.8 Hz

Centre Co ARES/ACS/RACES

W3GA - Rattlesnake Mtn

146.760-, PL 146.2 Hz

Blair Co ARES/ACS/RACES

W3QW - Altoona

146.820-, PL 123.0 Hz

Public Service Volunteer Opportunities

Glimcher Keystone Country Ride

Saturday, August 8, 2026.

For information go to <https://sites.psu.edu/drm6/bikemskcrham/>.

Contact Carmine Prestia K3CWP at carmine@gmail.com to volunteer.

Pennsylvania Trail Riders

Association / Seven Mountains

Dual Sport

September 5 & 6, 2026

For event information, go to <https://patrailriders.org/7-mountains-dual-sport/>.

Contact Carmine Prestia K3CWP at carmine@gmail.com to volunteer.

Contact Carmine Prestia K3CWP at carmine@gmail.com to volunteer.

The Raven Half Marathon

Sunday, October 4, 2026

Poe Valley State Park, Centre County.

For event information, go to <https://runtheraven.com/>.

Contact Carmine Prestia K3CWP at carmine@gmail.com to volunteer.

Contact Carmine Prestia K3CWP at carmine@gmail.com to volunteer.

Unpaved of the Susquehanna

Valley

Sunday, October 11, 2026

Lewisburg, Union County. For event

information, go to <https://unpavedpennsylvania.com/unpaved-of-the-susquehanna-river-valley-2/>.

unpavedpennsylvania.com/unpaved-of-the-susquehanna-river-valley-2/.

Contact Carmine Prestia K3CWP at carmine@gmail.com to volunteer.

Tussey Mountainback

October 24, 2026

Boalsburg, Centre County For event

information, go to <https://www.tusseymountainback50.com/>.

Contact Carmine Prestia K3CWP at carmine@gmail.com to volunteer.

Contact Carmine Prestia K3CWP at carmine@gmail.com to volunteer.

Hamfests of Note

08/08/2026 - W3PIE 76th Annual Gabfest

Location: Uniontown, PA

Sponsor: Uniontown Amateur Radio Club

Website: <http://w3pie.org>

08/30/2026 - Skyview Radio Society Swap

N Shop

Location: New Kensington , PA

Sponsor: Skyview Radio Society

Website: <http://www.skyviewradio.net>

09/13/2026 - Central PA Hamfest

Location: Clearfield PA

Sponsor: Clearfield County Amateur Radio Club

Club

Website: <https://clearfieldcountyarcc.net/>

2026 VE Testing

The 2026 schedule for VE Testing here in Clearfield County has been set. All examinations, unless otherwise noted, will be administered at the Clearfield County EOC Building, 911 Leonard Street, Clearfield, in the Training Room at 7 PM. Reservations are appreciated but not required. Your reservations allows the VE Team to ensure they have the appropriate test materials on hand for the class of license you wish to sit for. To make a reservation please contact Rich Brnik N3RBJ at rich.brnik@gmail.com or 814-571-5866.

The remaining 2026 Testing Schedule is as follows:

- July 17, 2026
- October 16, 2026

In addition to the above dates, there will also be a testing session at the Central PA Hamfest:

- September 13, 2026

CALENDAR ITEMS

•CCARC Weekly Net.

Tuesdays at 8 PM on the 147.255+ repeater. PL Tone 173.8 Hz. All licensed amateur radio operators are welcome to check-in.

•CCARC Radio Nights.

2nd Thursday of each month, 7 PM at Clearfield County EMA Building, 911 Leonard St., Clearfield.

•CCARC Business Meeting.

4th Thursday of each month, 7 PM at Clearfield County EMA Building, 911 Leonard St., Clearfield.

Central PA Hamfest

Sunday September 13th 2026, Clearfield County Fairgrounds, Community Hall Building.

ARES® Resources

• ARES® Manual [PDF]

<http://www.arrl.org/files/file/Public%20Service/ARES/ARESmanual2015.pdf>

• ARES® Field Resources Manual [PDF]

http://www.arrl.org/files/file/ARES_FR_Manual.pdf

• ARES® Task Book [Fillable PDF]

http://www.arrl.org/files/file/Public%20Service/ARES/ARRL-ARES-FILLABLE-TRAINING-TASK-BOOK-V2_1_1.pdf

• ARES® Plan [PDF]

<http://www.arrl.org/ares-plan>

• Emergency Communications Training

<https://www.arrl.org/emergency-communications-training>

CENTRAL PENNSYLVANIA HAMFEST

Presented by Clearfield County Amateur Radio Club

www.clearfieldcountyarc.net/hamfest

Swap Meet | Meet n Greet | Rag Chew | Exam Session



WHEN

Sunday September 13 2026

8AM to 12 PM

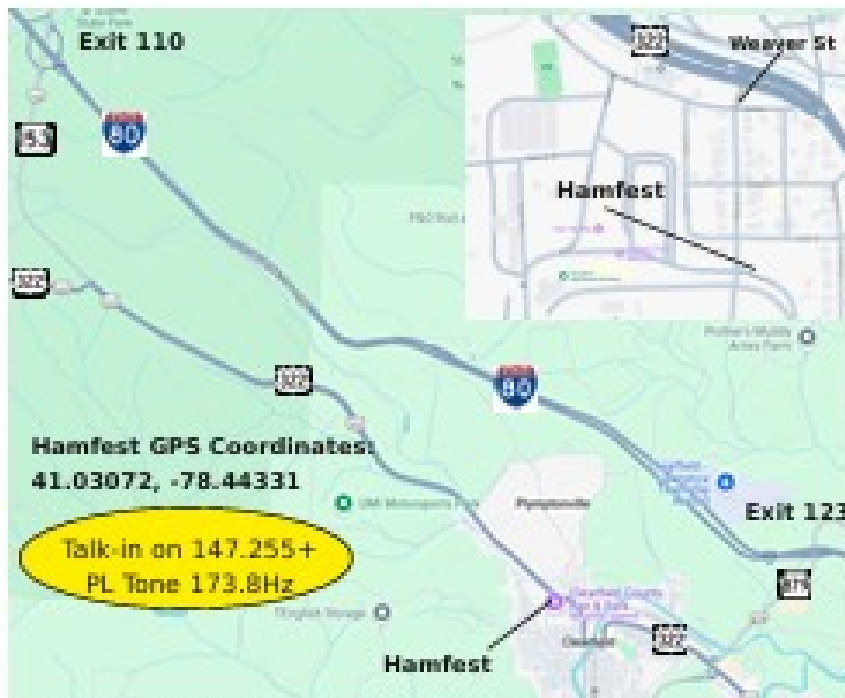
WHERE

DOOR PRIZES

Clearfield County Fair Grounds

Community Hall Building and surrounding grounds

Use Weaver Street Exit on US 322 at Clearfield



CLEARFIELD COUNTY AMATEUR RADIO CLUB HAMFEST COMMITTEE

Rich Brink N3RBJ

rich.brink@gmail.com

(814)571-5866

John Szwarc N3SPW

johnszwarc@gmail.com

(814)553-5649

Tim Lumadue N3PUL

tumadue176@gmail.com

(814)761-5002

FEES

Parking: FREE

General Admission: \$5*

Inside Vendor Table: \$10

Tailgate Spaces: \$5

*Active Duty Military/Emergency in uniform/under 12 free.

Reserve and pay for your table ahead of time: hamfest@clearfieldcountyarc.net

EXAM SESSION

--NO FEE FOR EXAM--

Beginings at 11 AM

(Reservations preferred but not required)

Contact: Mary Lewis N3UDN

E-mail: jms@windstream.net

Sponsor: Ridgeway ARC/Laurel VEC

You will need:

•Your FRN

•Photo ID or student ID

•Email adress

•Non-programable calculator (optional)

If testing for General or Extra bring your current license card issued by the FCC

NOTE: Reasonable accomodations honored. Advance notice is appreciated.



EVENT SCHEDULE

6 AM Set-up Dealers & Tailgating

8 AM Hamfest opens

8 AM ARES® Meeting

9 AM SKYWARN Spotter Training

10 AM ARRL Atlantic Division Director & Section Manager

11AM VE Testing

11:30AM Prize Drawings

12 PM Close

CONCESSIONS

Food - Drinks - Snacks

OUR SPONSORS

